

Office of Labor Market Information/Southwest Michigan – 209 E. Wash. Ave, Ste 100 • Jackson • MI 49201

MICHIGAN DEPT. OF ENERGY, LABOR & ECON. GROWTH/LABOR MARKET ANALYSIS - SOUTH CENTRAL AND WESTERN MICHIGAN
CIVILIAN LABOR FORCE ESTIMATES

By Place of Residence/Seasonally Unadjusted. October, 2009 **

Areas	CIVILIAN LABOR FORCE					EMPLOYMENT					UNEMPLOYMENT RATES		
	Oct. 2009	Sept. 2009	Oct. 2008	Monthly Change	Annual Change	Oct. 2009	Sept. 2009	Oct. 2008	Monthly Change	Annual Change	Oct 09	Sept 09	Oct 08
Battle Creek MSA	66,900	66,500	68,400	400	-1,500	58,900	58,200	63,100	700	-4,200	12.0	12.4	7.9
Jackson MSA	74,800	74,000	76,000	800	-1,200	63,900	62,900	69,200	1,000	-5,300	14.5	14.9	9.0
Kalamazoo MSA	169,800	166,800	173,500	3,000	-3,700	150,900	147,300	161,400	3,600	-10,500	11.1	11.7	6.9
Kalamazoo Co.	130,575	128,275	133,600	2,300	-3,025	116,700	113,875	124,825	2,825	-8,125	10.6	11.2	6.6
Van Buren Co.	39,275	38,525	39,875	750	-600	34,225	33,400	36,600	825	-2,375	12.9	13.3	8.2
Niles-BH MSA	77,500	77,050	79,700	450	-2,200	67,200	66,650	73,200	550	-6,000	13.2	13.5	8.2
Allegan Co.	53,950	54,300	54,700	-350	-750	46,975	47,100	50,475	-125	-3,500	12.9	13.2	7.7
Barry Co.	28,900	28,675	29,800	225	-900	26,050	25,675	27,775	375	-1,725	9.9	10.5	6.9
Branch Co.	21,825	21,850	21,975	-25	-150	18,925	18,800	19,950	125	-1,025	13.4	13.9	9.2
Cass Co.	26,125	25,825	26,850	300	-725	23,200	22,925	25,050	275	-1,850	11.2	11.2	6.7
Hillsdale Co.	20,975	20,900	21,075	75	-100	17,450	17,325	18,800	125	-1,350	16.7	17.1	10.8
Lenawee Co.	47,950	47,625	48,475	325	-525	40,575	40,000	43,550	575	-2,975	15.4	16.0	10.1
St. Joseph Co.	30,800	30,600	31,275	200	-475	26,700	26,350	28,400	350	-1,700	13.4	13.9	9.2
Michigan	4,846,000	4,824,000	4,917,000	22,000	-71,000	4,152,000	4,111,000	4,490,000	41,000	-338,000	14.3	14.8	8.7
U.S.A.*	153,635	153,617	155,012	18	-1,377	139,088	139,079	145,543	9	-6,455	9.5	9.5	6.1

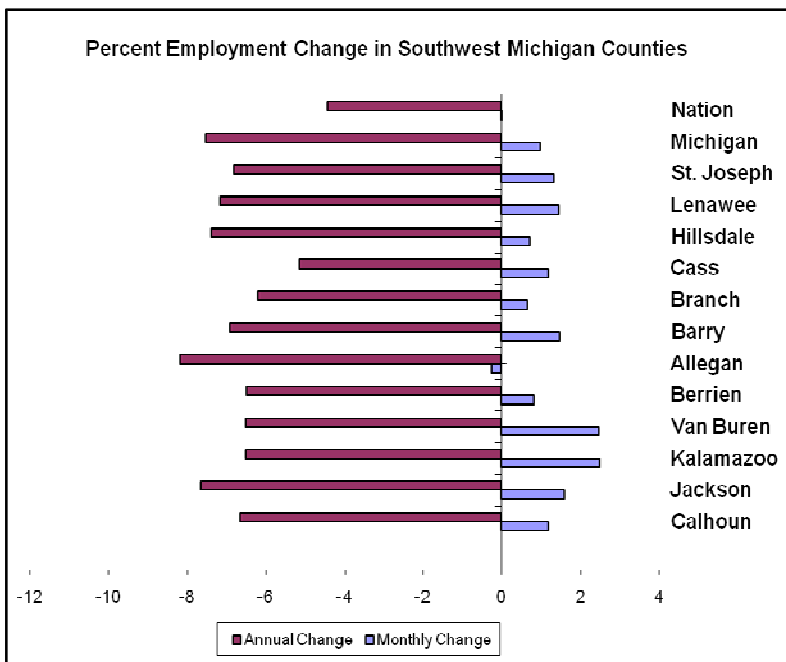
* Expressed in thousands; ** All labor force and employment numbers are rounded to the nearest 25 for counties, 100 for MSAs, and 1,000 for the State and the Nation.

October Jobless Rates Down Seasonally in All Regional Counties

Area counties continued to record seasonal job gains in the private and public education sectors. These gains were partially offset by seasonal employment declines in leisure and hospitality. Jobless rates edged down in October by an average of -0.4 percentage points.

Labor Force Mostly Up Over the Month but Down Over the Year

Labor force rose over the month in almost all regional counties, with the exception of Branch (-25) and Allegan (-350) counties. Labor force increases ranged from +75 in Hillsdale County to +2,300 in Kalamazoo County. Over the year, labor force declined in all regional counties, ranging from -100 in Hillsdale to -3,025 in Kalamazoo County.



Employment Mostly Up Over the Month but Substantially Down Over the Year in All Counties

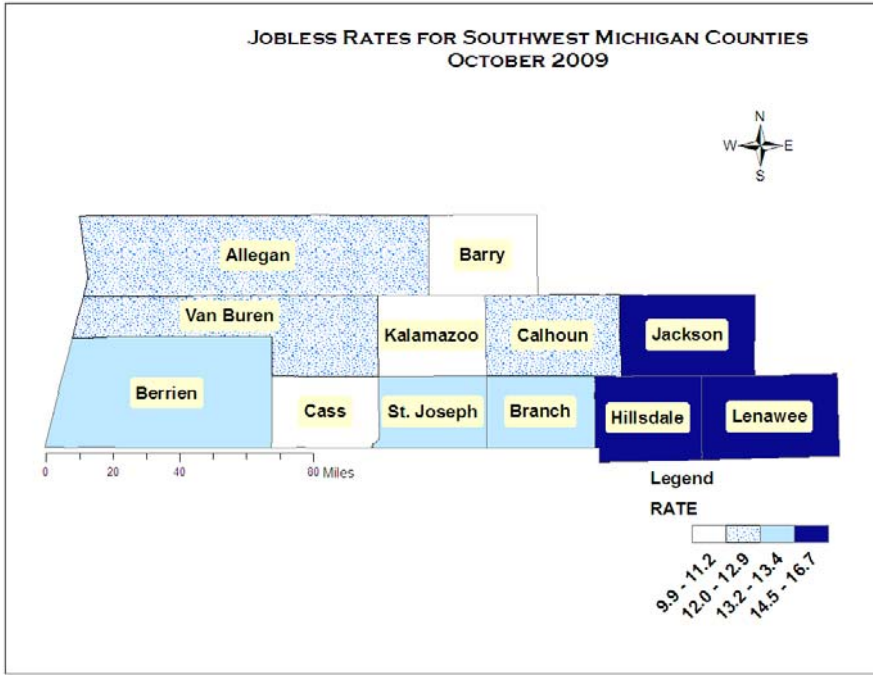
October employment by place of residence rose seasonally in almost all regional counties at an average of 1.4 percentage points, with the exception of Allegan County, where employment inched down by three tenths of a percentage point. Job gains ranged from +125 in Branch and Hillsdale counties to +2,825 in Kalamazoo County. Seasonal job additions were recorded in the education sector, as schools returned to full-staffing after the initial September recalls of workers who were temporary laid off over the summer. Professional and business services also added jobs in October, while employment in leisure and hospitality declined seasonally.

Over the year, employment fell sharply in all area counties, ranging from -1,025 in Branch to -8,125 in Kalamazoo County. The average rate of employment decline over the year in October was approximately 6.7 percent.

Jobless Rates Down over the Month but Substantially Up over the Year

October unemployment rates decreased in almost all area counties, with the exception of Cass County, where the rate remained flat over the month. Nine regional counties recorded lower rates than the statewide rate of 14.3 percent in October (Barry, Kalamazoo, Cass, Calhoun, Van Buren, Allegan, Berrien, Branch, and St. Joseph). The remaining three regional counties (Jackson, Lenawee, and Hillsdale) registered higher jobless rates than the state.

Jobless rates soared over the year by an average of 4.6 percentage points. Hillsdale County recorded the highest jobless rate increase over the year (+5.9 percentage points), followed by Jackson (+5.5) and Lenawee (+5.3).



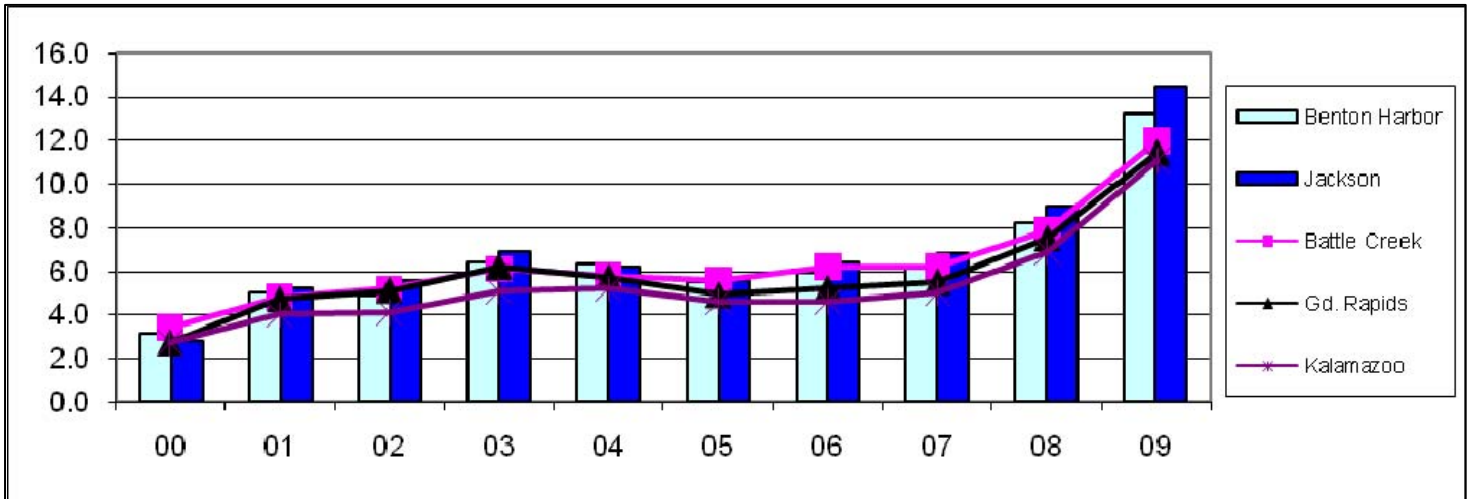
Local Metro Area October Unemployment Rates Since 2000

From October 2000 to October 2009, jobless rates escalated in the Jackson (+11.7 percentage points), Niles-Benton Harbor (+10.1), Grand Rapids (+8.7), Battle Creek (+8.6), and Kalamazoo (+8.4) metro areas.

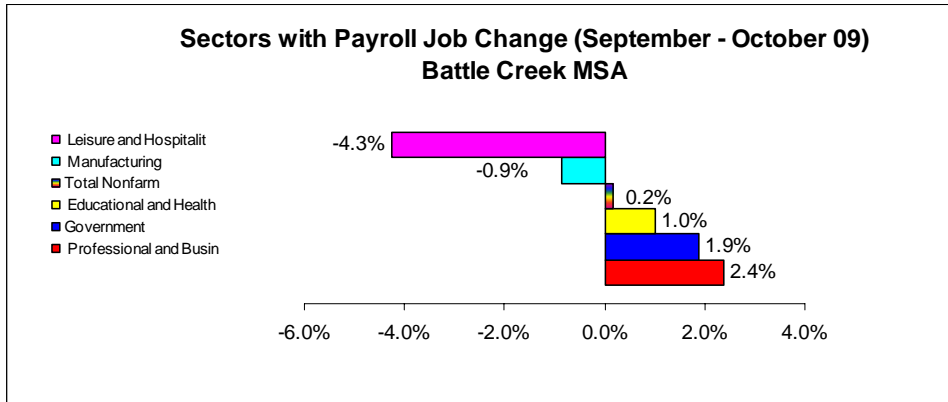
October unemployment rates increased from 2000 to 2003; fell in 2004-05; rose again in 2006-08, and then jumped sharply in 2009, as national recessionary conditions were exacerbated locally by troubles in the auto industry. The current year continues to set record high unemployment rates since the early 1980s.

Year \ Areas	00	01	02	03	04	05	06	07	08	09
Benton Harbor	3.1	5.0	4.9	6.4	6.3	5.5	5.9	6.1	8.2	13.2
Battle Creek	3.4	4.8	5.2	6.1	5.8	5.6	6.2	6.2	7.9	12.0
Gd. Rapids	2.7	4.7	5.1	6.2	5.7	4.9	5.2	5.5	7.5	11.4
Jackson	2.8	5.2	5.6	6.9	6.2	5.6	6.4	6.8	9.0	14.5
Kalamazoo	2.7	4.0	4.1	5.1	5.2	4.6	4.6	5.0	6.9	11.1

Comparing the Trend of Local MSAs' October Unemployment Rates Since 2000



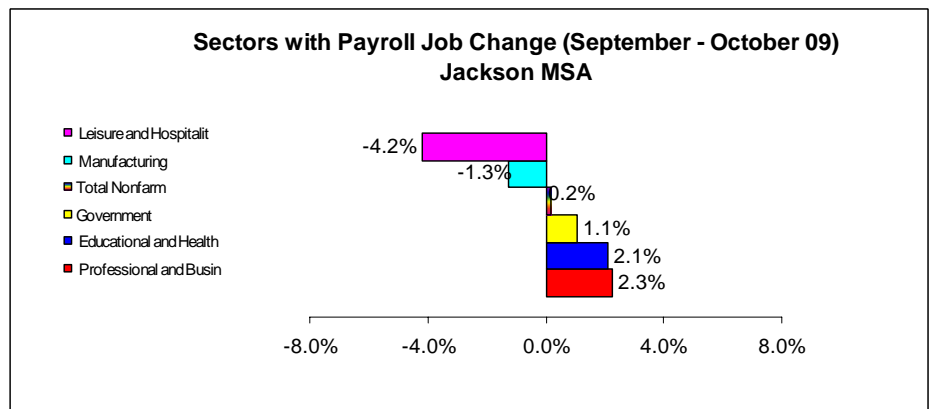
Nonfarm Payroll Jobs Up Seasonally Over the Month but Considerably Down Over the Year for Local Metropolitan Areas



The number of payroll jobs in the **Battle Creek MSA** (Calhoun County) remained virtually flat in October, inching up by 100. Private and public education added 300 jobs to the area's workforce, and employment in professional and business services rose by 100. However, leisure and hospitality lost 200 jobs seasonally; and manufacturing employment also declined by 100. Total payroll jobs were estimated at 55,800 during the month of October.

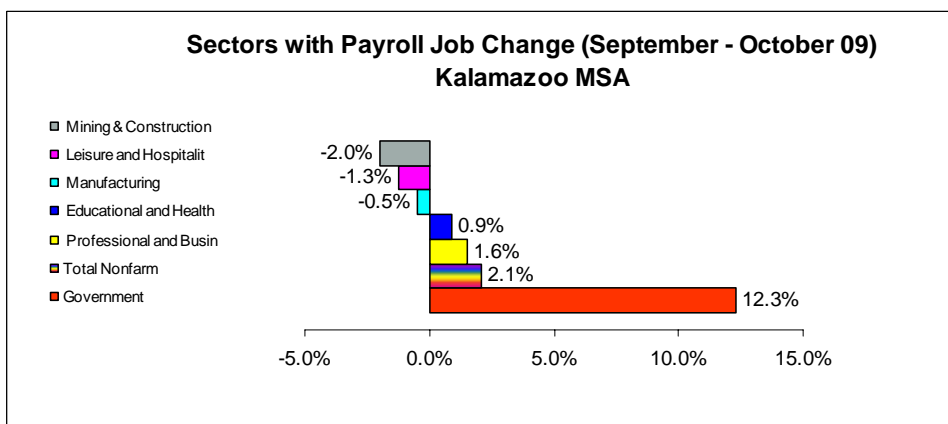
Over the year, payroll employment dropped across nearly all sectors, with the exception of private education and health services and other services (laundry, personal care, etc.), where employment remained flat over the year, and government (+1,300). A tribal owned casino opened in September and employment is counted in local government. Jobs fell over the year by 1,400 in manufacturing (mostly in durable goods, (-1,000), with a loss of 600 jobs in transportation equipment manufacturing alone). Employment dropped by 700 in professional & business services, and by 400 each in retail trade and construction. Leisure and hospitality lost 300 jobs over the year. Total industry employment in Battle Creek decreased by 2,400 (or -4.1%) from the level attained in the same month in 2008.

Payroll jobs in the **Jackson MSA** (Jackson County) were estimated at 54,000 in October (up 100 from September). A seasonal gain of 300 jobs was recorded in private and public education. However, the area lost 200 jobs seasonally in leisure and hospitality and 100 jobs in manufacturing.



Compared to October 2008, payroll job levels in most industries either declined or remained unchanged. The increase of 200 jobs recorded in government is likely due to a data collection timing issue. Manufacturing employment plunged by 1,300 over the year. Leisure and hospitality and retail trade each cut 500 jobs, while professional and business services and construction each lost 400 jobs over the year. Overall payroll employment in Jackson was 3,300 (or -5.8%) below last year's October level.

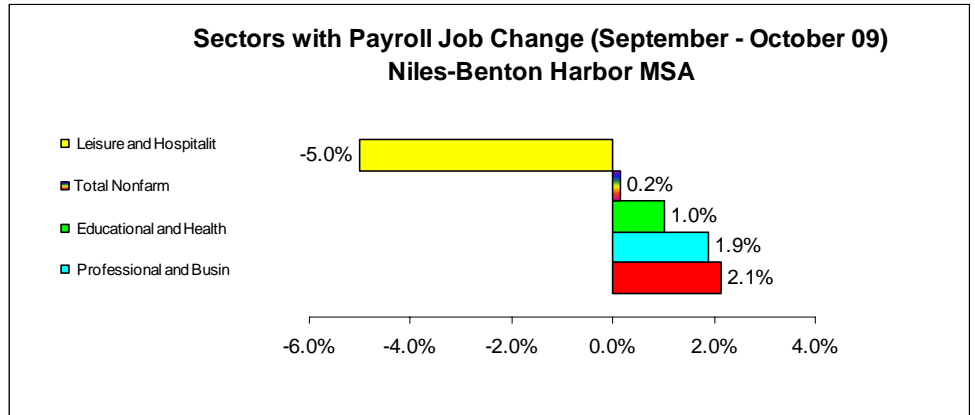
Nonfarm payroll jobs in the **Kalamazoo-Portage MSA** (Kalamazoo and Van Buren counties) rose by 2,800 in October, primarily due to a seasonal job gain in the local and state public education sector (+2,800). Construction and leisure and hospitality lost 300 jobs in total, while a job cut of 100 was recorded in manufacturing. Kalamazoo's total nonfarm payroll job count was estimated at 139,000 in October.



Over the year, employment continued to fall in manufacturing (-2,300, with -1,300 in durable goods manufacturing).

Employment in professional and business services also plunged by 1,800 over the year, and jobs in construction dropped (-900), while retail trade employment fell by 700 over the year. The over-the-year job gain recorded in the government sector is likely overstated due to shifts in the timing of data collection. Employment in private education and health care in the Kalamazoo area inched up by 100 over the year. Overall payroll jobs in Kalamazoo were down 6,000 (or -4.1 percent) over the year.

Payroll employment in the **Niles-Benton Harbor MSA** (Berrien County) inched up by 100 to 61,100. As in other areas of Michigan, Niles-Benton Harbor recorded seasonal job gains in the private and public education sector (+300). Niles-Benton Harbor also recorded 100 additional jobs in professional and business services. However, the area lost 300 jobs in leisure and hospitality. Employment in other sectors remained flat over the month.



Over the year, employment in almost all sectors showed declines, with the exceptions of financial activities, whose employment remained unchanged and government, which added 100 jobs over the year.

Manufacturing employment was 1,600 below last year’s level in October. Jobs in leisure and hospitality and retail trade dropped by 500 each, while professional and business services and construction each lost 400 jobs. Total payroll jobs in Benton Harbor were down by 3,800 (or -5.9 percent) from October 2008 levels.

Note:

Labor force and payroll job data for the prior month (September 2009) have been revised from preliminary estimates.

FOR MORE INFORMATION, please contact the Regional Analyst, Dr. Leonidas Murembya, in Jackson at 517/841-5634, or the Detroit Office of Labor Market Information at 313/456-3090, or visit our website at <http://www.michigan.gov/lmi>.

Southwest Michigan MSAs Payroll Employment - October 2009

Southwest Michigan MSAs Payroll Employment - October 2009							
Battle Creek MSA							
	October 2009	September 2009	October 2008	Monthly Change	Monthly % Change	Annual Change	Annual % Change
Total Nonfarm	55,800	55,700	58,200	100	0.2%	-2,400	-4.1%
Mining, Logging, and Construction	1,800	1,800	2,200	0	0.0%	-400	-18.2%
Manufacturing	11,500	11,600	12,900	-100	-0.9%	-1,400	-10.9%
Trade, Transportation,	8,800	8,800	9,400	0	0.0%	-600	-6.4%
Financial Activities	1,300	1,300	1,500	0	0.0%	-200	-13.3%
Professional and Business	4,300	4,200	5,000	100	2.4%	-700	-14.0%
Educational and Health	9,900	9,800	9,900	100	1.0%	0	0.0%
Leisure and Hospitality	4,500	4,700	4,800	-200	-4.3%	-300	-6.3%
Other Services	2,400	2,400	2,400	0	0.0%	0	0.0%
Government	10,800	10,600	9,500	200	1.9%	1,300	13.7%
Jackson MSA							
	October 2009	September 2009	October 2008	Monthly Change	Monthly % Change	Annual Change	Annual % Change
Total Nonfarm	54,000	53,900	57,300	100	0.2%	-3,300	-5.8%
Mining, Logging, and Construction	1,600	1,600	2,000	0	0.0%	-400	-20.0%
Manufacturing	7,700	7,800	9,000	-100	-1.3%	-1,300	-14.4%
Trade, Transportation, Utilities	11,200	11,200	11,900	0	0.0%	-700	-5.9%
Information	500	500	500	0	0.0%	0	0.0%
Financial Activities	1,800	1,800	1,900	0	0.0%	-100	-5.3%
Professional and Business	4,500	4,400	4,900	100	2.3%	-400	-8.2%
Educational and Health	9,700	9,500	9,800	200	2.1%	-100	-1.0%
Leisure and Hospitality	4,600	4,800	5,100	-200	-4.2%	-500	-9.8%
Other Services	2,800	2,800	2,800	0	0.0%	0	0.0%
Government	9,600	9,500	9,400	100	1.1%	200	2.1%
Kalamazoo MSA							
	October 2009	September 2009	October 2008	Monthly Change	Monthly % Change	Annual Change	Annual % Change
Total Nonfarm	139,000	136,200	145,000	2,800	2.1%	-6,000	-4.1%
Mining, Logging, and Construction	4,900	5,000	5,800	-100	-2.0%	-900	-15.5%
Manufacturing	19,300	19,400	21,600	-100	-0.5%	-2,300	-10.6%
Trade, Transportation, Utilities	23,100	23,100	24,400	0	0.0%	-1,300	-5.3%
Information	1,300	1,300	1,400	0	0.0%	-100	-7.1%
Financial Activities	7,700	7,700	8,000	0	0.0%	-300	-3.8%
Professional and Business	13,100	12,900	14,900	200	1.6%	-1,800	-12.1%
Educational and Health	22,300	22,100	22,200	200	0.9%	100	0.5%
Leisure and Hospitality	15,700	15,900	15,800	-200	-1.3%	-100	-0.6%
Other Services	6,000	6,000	6,100	0	0.0%	-100	-1.6%
Government	25,600	22,800	24,800	2,800	12.3%	800	3.2%
Niles-Benton Harbor MSA							
	October 2009	September 2009	October 2008	Monthly Change	Monthly % Change	Annual Change	Annual % Change
Total Nonfarm	61,100	61,000	64,900	100	0.2%	-3,800	-5.9%
Mining, Logging, and Construction	1,700	1,700	2,100	0	0.0%	-400	-19.0%
Manufacturing	12,000	12,000	13,600	0	0.0%	-1,600	-11.8%
Trade, Transportation, Utilities	10,900	10,900	11,600	0	0.0%	-700	-6.0%
Information	600	600	700	0	0.0%	-100	-14.3%
Financial Activities	2,200	2,200	2,200	0	0.0%	0	0.0%
Professional and Business	5,400	5,300	5,800	100	1.9%	-400	-6.9%
Educational and Health	9,800	9,700	9,900	100	1.0%	-100	-1.0%
Leisure and Hospitality	5,700	6,000	6,200	-300	-5.0%	-500	-8.1%
Other Services	3,200	3,200	3,300	0	0.0%	-100	-3.0%
Government	9,600	9,400	9,500	200	2.1%	100	1.1%

Southwest Michigan Works! Agencies Local Area Employment Data - 2009

	January	February	March	April	May	June	July	August	September	October	November	December	Ann Avg
Barry-Branch-Calhoun													
Labor force	117,625	117,425	117,400	116,350	117,925	120,800	120,150	119,000	117,000	117,675			118,175
Employment	104,475	104,025	103,325	103,175	103,125	104,550	104,050	104,300	102,700	103,850			103,750
Unemployed	13,150	13,400	14,075	13,200	14,775	16,250	16,100	14,700	14,300	13,825			14,425
Rate	11.2	11.4	12.0	11.3	12.5	13.4	13.4	12.3	12.2	11.7			12.2
Barry													
Labor force	29,150	29,050	28,925	28,525	28,925	29,550	29,275	29,075	28,675	28,900			29,000
Employment	26,375	26,200	25,950	25,850	25,900	26,175	26,000	25,975	25,675	26,050			26,025
Unemployed	2,800	2,850	2,975	2,675	3,025	3,375	3,275	3,100	3,000	2,850			3,000
Rate	9.6	9.8	10.3	9.4	10.5	11.4	11.2	10.6	10.5	9.9			10.3
Branch													
Labor force	21,875	22,050	22,150	22,025	22,350	23,000	22,575	22,250	21,850	21,825			22,200
Employment	18,950	18,900	18,850	18,975	19,025	19,375	19,075	19,100	18,800	18,925			19,000
Unemployed	2,950	3,125	3,275	3,025	3,325	3,650	3,500	3,125	3,050	2,925			3,200
Rate	13.4	14.2	14.8	13.8	14.8	15.8	15.5	14.1	13.9	13.4			14.4
Calhoun													
Labor force	66,600	66,300	66,300	65,800	66,600	68,200	68,300	67,700	66,500	66,900			66,900
Employment	59,200	58,900	58,500	58,300	58,200	59,000	59,000	59,200	58,200	58,900			58,700
Unemployed	7,400	7,400	7,800	7,500	8,400	9,200	9,300	8,500	8,200	8,100			8,200
Rate	11.1	11.2	11.8	11.4	12.7	13.5	13.6	12.5	12.4	12.0			12.2
Berrien-Cass-Van Buren													
Labor force	143,825	142,850	142,925	140,875	142,050	145,200	144,525	143,550	141,400	142,875			143,025
Employment	126,600	125,675	125,025	124,650	124,350	125,800	125,300	125,100	122,975	124,675			125,050
Unemployed	17,225	17,175	17,900	16,250	17,700	19,400	19,225	18,450	18,425	18,225			17,975
Rate	12.0	12.0	12.5	11.5	12.5	13.4	13.3	12.8	13.0	12.7			12.6
Berrien													
Labor force	77,000	76,700	77,000	76,100	77,300	79,300	79,200	78,500	77,100	77,500			77,600
Employment	68,100	67,600	67,400	67,300	67,400	68,200	68,200	68,000	66,700	67,200			67,600
Unemployed	8,900	9,100	9,600	8,900	9,900	11,100	11,100	10,500	10,400	10,200			10,000
Rate	11.6	11.9	12.4	11.6	12.8	14.0	14.0	13.4	13.5	13.2			12.9
Cass													
Labor force	26,750	26,425	26,375	26,075	26,275	26,400	26,075	25,925	25,825	26,125			26,225
Employment	23,850	23,600	23,375	23,325	23,250	23,400	23,200	23,075	22,925	23,200			23,325
Unemployed	2,900	2,800	3,025	2,775	3,025	3,000	2,900	2,850	2,900	2,925			2,900
Rate	10.8	10.6	11.4	10.6	11.5	11.4	11.1	11.0	11.2	11.2			11.1
Van Buren													
Labor force	40,075	39,700	39,525	38,650	38,500	39,450	39,225	39,100	38,525	39,275			39,200
Employment	34,650	34,450	34,225	34,025	33,750	34,175	33,950	34,050	33,400	34,225			34,100
Unemployed	5,400	5,250	5,300	4,625	4,750	5,300	5,250	5,025	5,125	5,050			5,100
Rate	13.5	13.2	13.4	12.0	12.4	13.4	13.4	12.9	13.3	12.9			13.0
Kalamazoo-St. Joseph													
Labor force	160,000	159,550	159,975	157,800	159,175	164,100	162,725	163,100	158,900	161,375			160,600
Employment	144,875	144,075	143,200	142,450	141,300	143,275	142,225	143,900	140,225	143,375			142,825
Unemployed	15,125	15,450	16,775	15,350	17,875	20,825	20,525	19,200	18,650	18,000			17,750
Rate	9.5	9.7	10.5	9.7	11.2	12.7	12.6	11.8	11.7	11.2			11.1
Kalamazoo													
Labor force	129,050	128,925	129,100	127,525	128,325	132,050	131,300	130,850	128,275	130,575			129,600
Employment	118,200	117,500	116,725	116,050	115,075	116,525	115,800	116,125	113,875	116,700			116,250
Unemployed	10,850	11,425	12,375	11,500	13,250	15,525	15,475	14,725	14,400	13,875			13,350
Rate	8.4	8.9	9.6	9.0	10.3	11.8	11.8	11.3	11.2	10.6			10.3
St. Joseph													
Labor force	30,950	30,625	30,875	30,275	30,850	32,050	31,425	32,250	30,600	30,800			31,075
Employment	26,675	26,575	26,475	26,425	26,225	26,750	26,400	27,775	26,350	26,700			26,625
Unemployed	4,275	4,050	4,425	3,850	4,625	5,300	5,025	4,475	4,250	4,125			4,425
Rate	13.8	13.2	14.3	12.7	15.0	16.5	16.0	13.9	13.9	13.4			14.3
South Central Michigan													
Labor force	143,925	143,775	144,025	142,700	144,475	148,250	146,650	143,975	142,500	143,675			144,475
Employment	123,975	123,550	122,800	122,700	121,875	123,050	121,300	121,050	120,250	122,000			122,275
Unemployed	19,925	20,225	21,225	20,000	22,575	25,175	25,350	22,925	22,250	21,675			22,175
Rate	13.8	14.1	14.7	14.0	15.6	17.0	17.3	15.9	15.6	15.1			14.2
Hillsdale													
Labor force	21,275	21,125	21,425	21,100	21,475	22,175	21,750	21,300	20,900	20,975			21,350
Employment	17,600	17,550	17,575	17,625	17,500	17,775	17,400	17,525	17,325	17,450			17,525
Unemployed	3,675	3,575	3,875	3,475	3,975	4,400	4,350	3,800	3,575	3,500			3,825
Rate	17.3	17.0	18.0	16.4	18.5	19.9	20.0	17.8	17.1	16.7			17.9
Jackson													
Labor force	74,400	74,500	74,400	73,600	74,700	76,300	76,200	75,000	74,000	74,800			74,800
Employment	65,400	65,100	64,500	64,200	64,100	64,500	64,000	63,700	62,900	63,900			64,200
Unemployed	9,000	9,400	10,000	9,400	10,600	11,800	12,200	11,300	11,000	10,800			10,500
Rate	12.1	12.7	13.4	12.7	14.1	15.5	16.0	15.1	14.9	14.5			14.1
Lenawee													
Labor force	48,275	48,150	48,175	48,025	48,300	49,775	48,725	47,650	47,625	47,950			48,275
Employment	40,975	40,950	40,775	40,850	40,250	40,825	39,875	39,825	40,000	40,575			40,500
Unemployed	7,300	7,200	7,425	7,175	8,050	8,925	8,850	7,825	7,650	7,375			7,775
Rate	15.1	15.0	15.4	14.9	16.7	18.0	18.2	16.4	16.0	15.4			16.1